

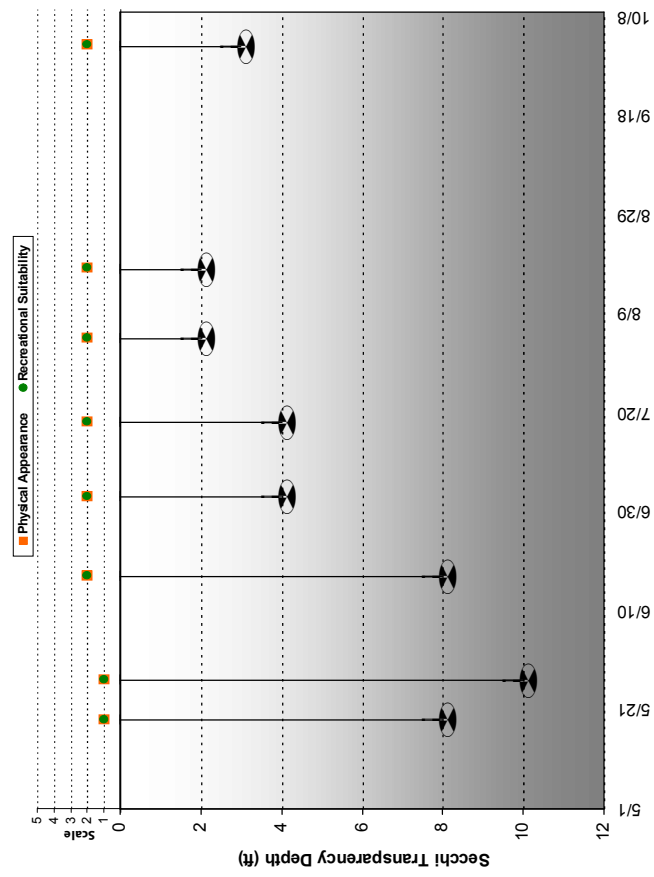
CLMP Individual Site Report

Current year data: Site-specific

Volunteer: Tom McKenzie
Lake: West Rush (13-0069-02) **Lake Area (acres):** 1567.1
Site: 204 **Max Depth (ft) (if available):** 42
County: CHISAGO **Ecoregion:** North Central Hardwood Forests
Nearest Town: 6 MI W OF RUSH CITY
Years of data at this site by this volunteer: 12 **Total years of CLMP data at this site:** 14

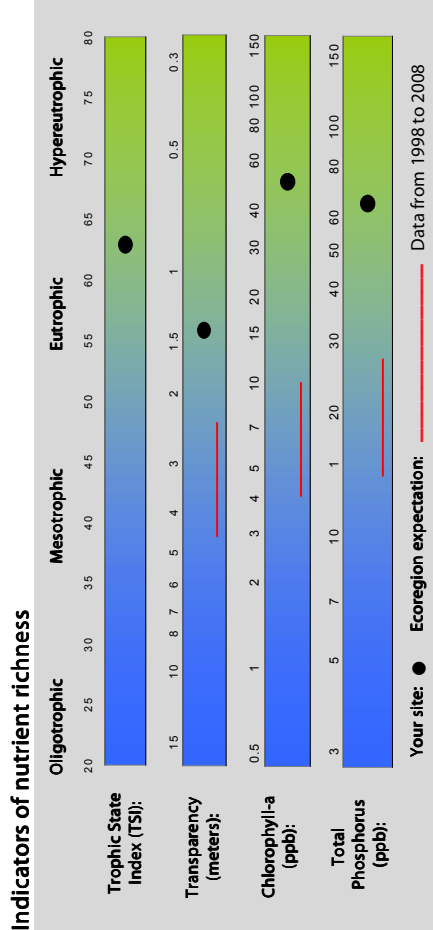
Current year summary 5/19/2008 to 10/2/2008
Secchi Transparency Data (ft): Mean: 5.1, Min: 2.0, Max: 10.0
Physical Appearance: Count: 8, Mean: 2, Min: 1, Max: 2
Recreational Suitability: Count: 8, Mean: 2, Min: 1, Max: 2

2008 Secchi transparency and user perception data (if available)



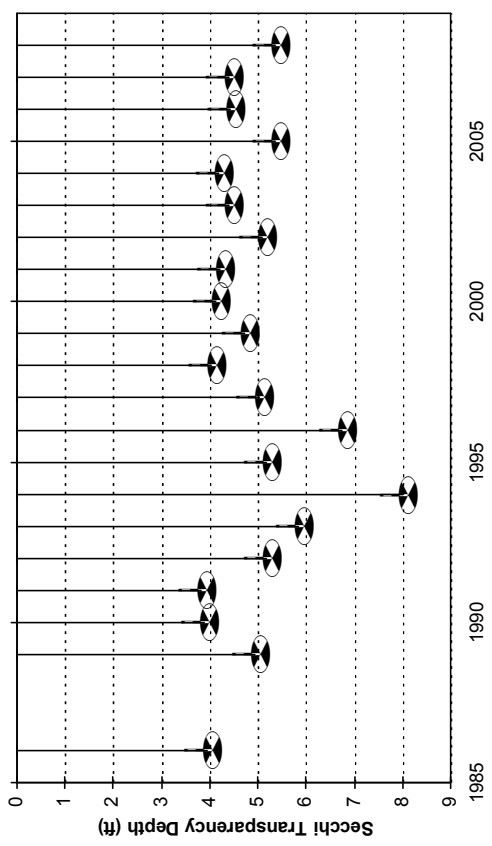
CLMP Individual Site Report

Historic data summary: Whole-lake



Secchi transparency trend data

Trend analysis result: This lake exhibits no clear water clarity trend.



Aquatic recreation assessment: This lake does not meet water quality standards for recreational suitability.



Citizen Lake Monitoring Program

2008 Individual Site Report

Lake: West Rush

Site: 204

Introduction

Thank you for participating in the Citizen Lake Monitoring Program (CLMP)! The Minnesota Pollution Control Agency (MPCA) greatly appreciates the valuable work that you do to protect and improve your lake's water quality.

Understanding Your Report

A total of 1,302 CLMP volunteers monitored 1,939 sites on 1,317 lakes in 2008. This report provides you with summary information for the specific site you monitored this year, as well as historic data for your whole lake.

Page two of this report provides an in-depth look at the CLMP data that you collected in 2008 for your lake. It presents site-specific summary statistics and a graph of your current year's data.

Page three of this report shows whole-lake summary information based on all available data for your lake. It is divided into three sections: "Indicators of nutrient richness," "Secchi transparency trend data," and "Aquatic recreation assessment."

The "Indicators of nutrient richness" section depicts your lake's overall health. It also provides ten-year average total phosphorus (TP), chlorophyll-a, and Secchi transparency values for your lake if the data is available. The scale ranges from "Oligotrophic" which are nutrient poor lakes to "Hypereutrophic" which are very nutrient rich.

The "Secchi transparency trend data"

section describes how the transparency of your lake has changed statistically over time. It also provides a graph of your lake's transparency over time.

The "Aquatic recreation assessment" section depicts how well this lake can support aquatic recreation uses such as swimming, wading, and overall aesthetics.

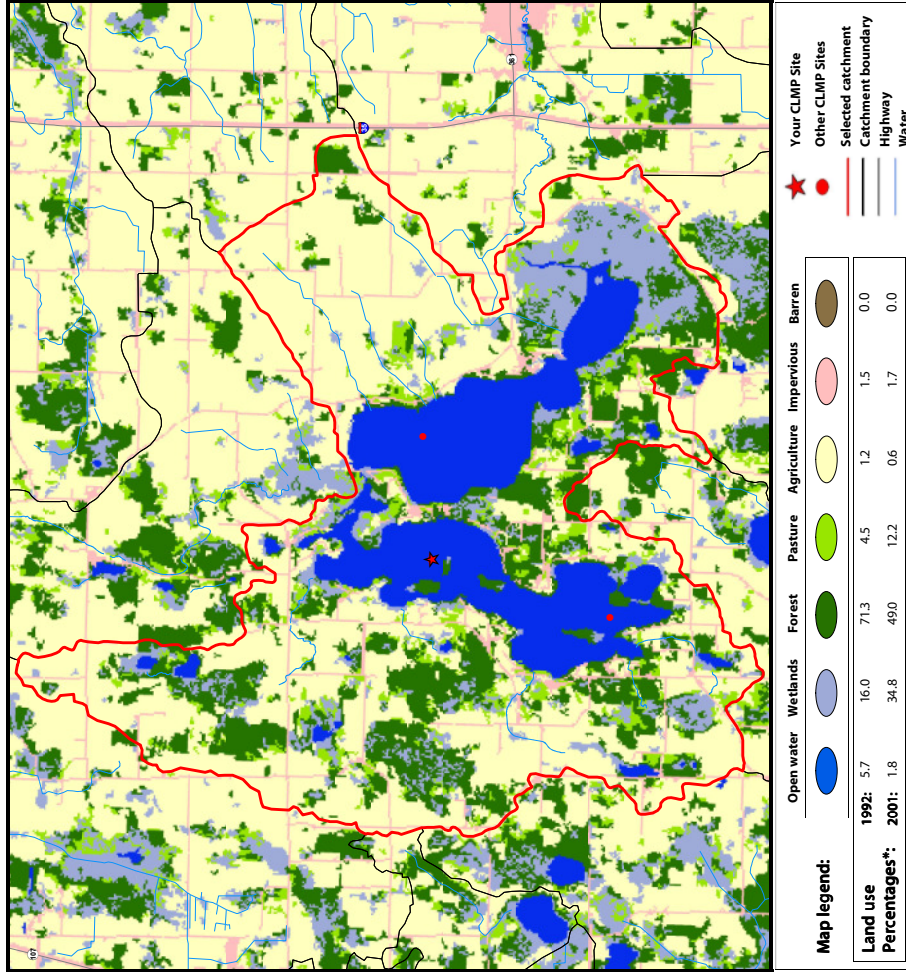
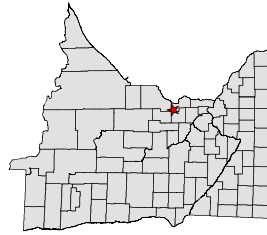
Page four provides a map of your lake's catchment area and land uses, as well as a table showing how land uses have changed over time. "Lake catchment area" refers to an area of land that is hydrologically connected to your lake.

Lake catchments were mapped by the Minnesota Department of Natural Resources (DNR), and represent the smallest unit of the DNR's watershed dataset. These catchments are approximate, and will be updated by the DNR as new information and mapping technologies become available.

For More Information

If you have questions or comments on this report, please contact CLMP staff at 651-296-6300 (Twin Cities Metro Only) or 800-657-3864 (Greater MN only) or by e-mail at: clmp@pca.state.mn.us

If you would like to see a summary of all CLMP data collected during 2008, the statewide annual report is available on the MPCA Web site: www.pca.state.mn.us/water/clmp-publications.html#annualreports



*Within the lake catchment. Map shows 2001 land use data.

Scale: One inch = 1.2 miles

File: 3814_13-0069-02_204

