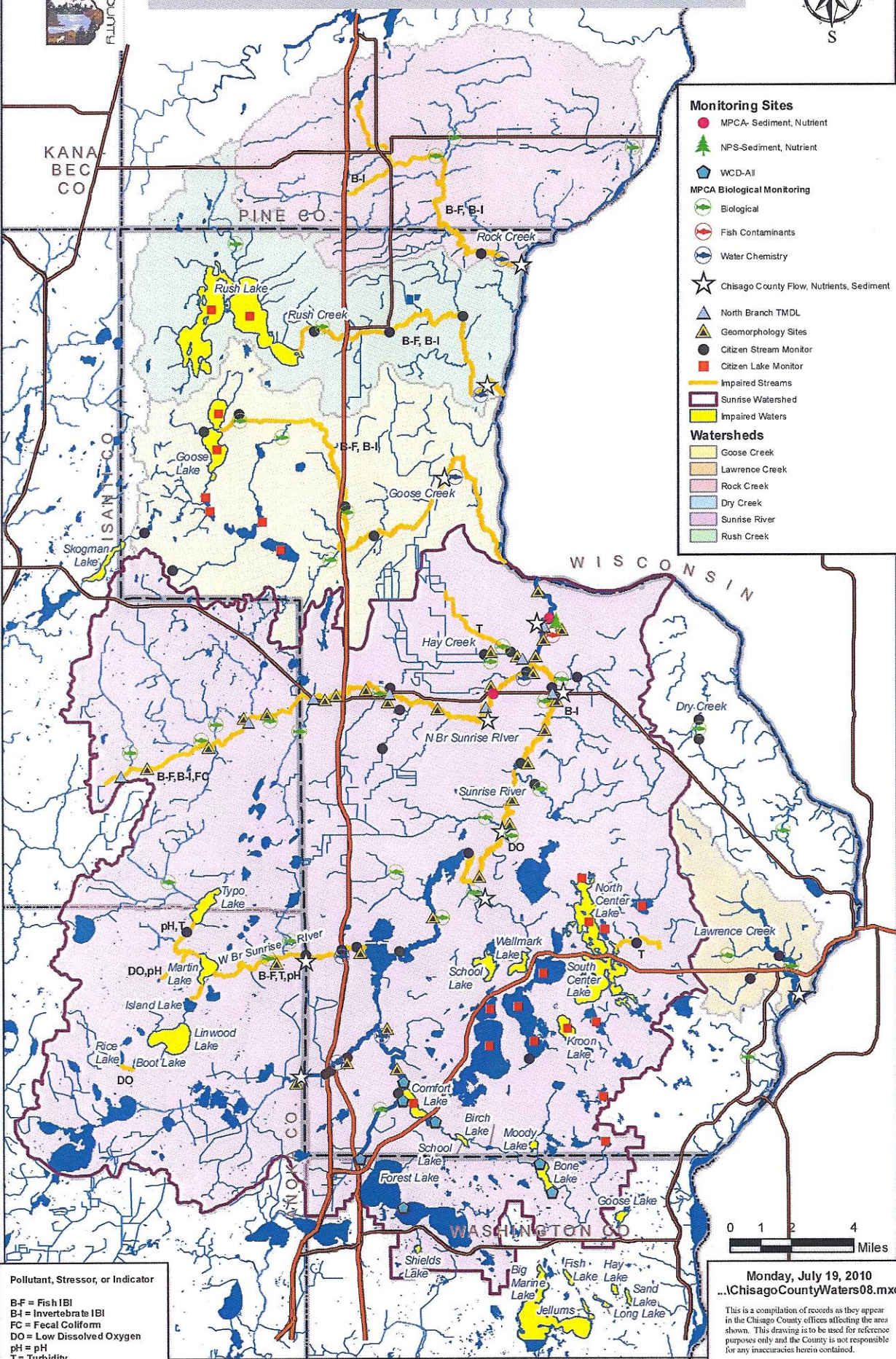




# Chisago County Waters



**Monitoring Sites**

- MPCA- Sediment, Nutrient
- NPS-Sediment, Nutrient
- WCD-AI

**MPCA Biological Monitoring**

- Biological
- Fish Contaminants
- Water Chemistry
- ★ Chisago County Flow, Nutrients, Sediment
- ▲ North Branch TMDL
- ▲ Geomorphology Sites
- Citizen Stream Monitor
- Citizen Lake Monitor

— Impaired Streams  
 — Impaired Waters

**Watersheds**

- Goose Creek
- Lawrence Creek
- Rock Creek
- Dry Creek
- Sunrise River
- Rush Creek

**Pollutant, Stressor, or Indicator**

B-F = Fish IBI  
 B-I = Invertebrate IBI  
 FC = Fecal Coliform  
 DO = Low Dissolved Oxygen  
 pH = pH  
 T = Turbidity



Monday, July 19, 2010  
 ...[Chisago CountyWaters08.mxd

This is a compilation of records as they appear in the Chisago County offices affecting the area shown. This drawing is to be used for reference purposes only and the County is not responsible for any inaccuracies herein contained.